



DRINKING BOWLS FOR SOW WITH PIGLETS IN FARROWING PEN



EDELSTAHL
**Rost
frei**
STAINLESS STEEL



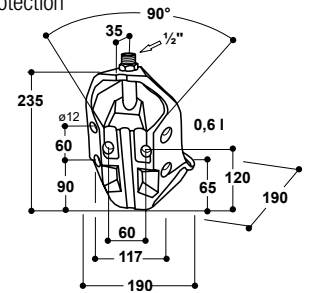
102.0262

131.0152

Drinking Bowl with Drink Inducer Model 370 with stainless steel valve

Ref. 100.0379

- Bowl made of **cast iron, completely enamelled**, easy to clean
- Smoothly running stainless steel tube valve even at high water pressure of max. 6 bar
- **With enticement basin** behind the tube valve, which encourages the animals to drink on their own
- Calm water flow through tube valve
- **Water flow continuously adjustable from outside** by means of a regulation screw
- When used in farrowing pens as drinking bowl for the sow and piglets : floor installation next to the feeder. Additional Installation of valve protection (Ref. 102.0262) is highly recommended!



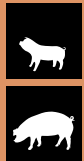
ACCESSORIES:

- **1 fixing bracket** (Ref. 131.0152), for fixation on 1" – 1½" pipes
- **1 protection bracket** for Model 370 (Ref. 102.0262)

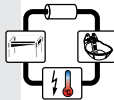
RECOMMENDED FOR:

Sow with piglets in farrowing pen, sows

Ref.	Type	Packing Hints
100.0379	Drinking bowl Mod. 370 -VA½", stainless steel valve	1 piece/box
131.0152	Fixing bracket M10 1"-1½", galvanized	1 piece
102.0262	Valve protection bracket	1 piece



EDELSTAHL
**Rost
frei**
STAINLESS STEEL

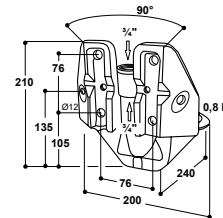


100.3759

Drinking Bowl with Drink Inducer Model 375 with ¾" stainless steel valve

Ref. 100.3759

- Bowl made of **cast iron, completely enamelled**, easy to clean
- **Always fresh and clean water** – no risk of dirty water as in the case of drinking bowls with float valve
- Smoothly running tube valve even at high water pressure of max. 6 bar
- Valve can be operated from all sides
- With **enticement basin** behind the tube valve, which encourages the animals to drink on their own
- Calm water flow through tube valve
- ¾" female connection from top and bottom: **suited for installation into water circuits!**
- **Water flow continuously adjustable** from outside by means of a **regulation screw**
- Special back side design enables easy fixation into 90° corners, on the wall or on pipes



ACCESSORIES:

- **2 fixing brackets** (Ref. 131.0169), for fixation on 1" – 1½" pipes
- **Connection set for ¾" water circuits** (Ref. 103.1983), made of stainless steel

RECOMMENDED FOR: Sow with piglets in farrowing pen, sows

Ref.	Type	Packing Hints
100.3759	Drinking bowl Mod. 375-VA¾", stainless steel valve	1 piece/box
131.0169	Fixing bracket M12 1½" – 2", galvanized	1 piece/bag
102.1127	Connection pipe stainless steel ¾", 19 cm, straight, m, m	1 piece
103.1983	Connection set for ¾" water circuits	1 piece/bag
102.0249	Valve protection, for Mod. 25R, 12P, 18P, 46, 375, 1200, 1200P	1 piece



103.1983



131.0169



131.0169



102.1127



102.0249

